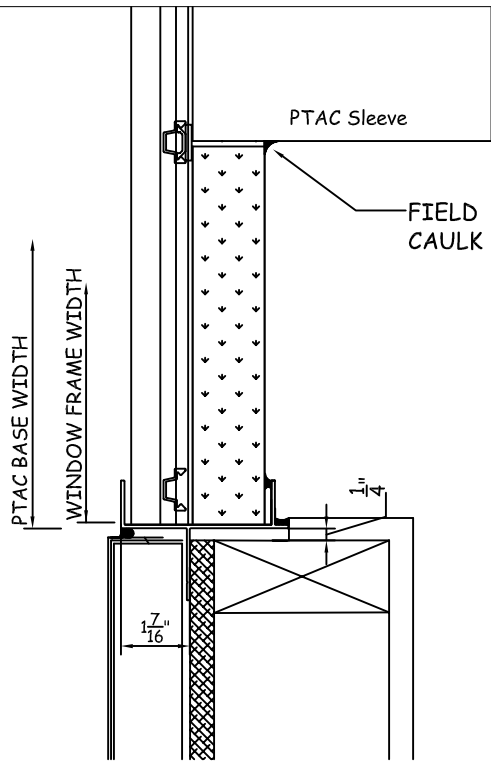


SERIES 3500 INCLUDES AN OPTIONAL STOOL THAT MAY BE USED IF "KNEE WALL" IS NOT USED OR IF ADDITIONAL WIND LOAD SUPPORT IS REQUIRED.



A3 JAMB AT PTAC BASE

GENERAL NOTES

- HEIGHT TO BE MEASURED ABOVE FINISH FLOOR.
- LOUVER DESIGN IS BASED ON (ADVISE) PTAC UNITS.
- ADVISE IF PTAC SLEEVE SIZE IS NOT 42" X 16".
- ALL PTACS TO BE LOCATED IN THE CENTER (NOT OFFSET).
- FINISHES
 - PTAC BASE SYSTEM IS TO BE TGIC POLYESTER POWDER COATED STANDARD PAINT TO MATCH WINDOWS AS CLOSE AS PRACTICAL.
 - PTAC BAFFLES ARE DARK BRONZE PAINT.
 - PANELS @ PTAC LOUVER SECTION
 - EXTERIOR OF BLANK OUT PANEL IS BRONZE EMBOSSED ALUMINUM.
 - INTERIOR OF BLANK OUT PANEL IS BEIGE EMBOSSED ALUMINUM.
- PTAC BASE SYSTEM HAS THERMAL BARS AND THERMAL SLOTS IN HORIZONTALS.
- MUST BE CAULKED AT CONNECTION OF WINDOW TO PTAC BASE AS SHOWN.
- WINDOWS WILL BE INSTALLED INTO PTAC BASE SYSTEM @ JOB SITE.
- FIELD NOTCH WINDOW NAIL FIN 3/4" @ BOTTOM CORNERS SO WINDOW WILL SET INTO BASE.

A1 SECTION THROUGH PTAC BASE AT BLANKOUT PANELS
(Shown at concrete slab w/o self-leveling topping.)

| | | | |
|-----------------------------------|-----|--------|--------------|
| PTAC Base Series 3250/3500 | | | |
| Reference Drawing | | | |
| DRAWN BY: | JKK | DATE √ | JOB NO: |
| CHECKED BY: | | / / | SCALE: 3"=1' |

MANUFACTURED BY
BENCHMARK FABRICATING, LLC
 1454 Second Street PO Box 68 Dudley, Georgia 31022
 Phone 478-676-4979 Fax 478-676-2009
 benchm@progressivetel.com
 www.benchmarkfabricating.com
 12-21-09 Sheet 1